

The Industry Leader in Architectural Hardware and Door Security Products

DON-JO MFG., INC.

MH Series Magnetic Door Holders



Don-Jo MH Series Magnetic Door Holders, are designed to hold doors open and release the door by remote switch or fire life safety command center activation.

- Choice of 2 dual AC/DC voltages:
 - 1224 Voltage Inputs 12V/30lbs; 24V/30lbs; Apply 24V to 12V input for 751bs*
 - 24120 Voltage Input 24V/40lbs; 120V/35lbs; Apply 120V to 24V input for 1101bs*

High Holding Force standard Reduces stock or need to special order high holding force.
Determined by field selected voltage input*
- Very low power consumption. Reduce power supply requirements and energy costs.
- Screw terminal block input connections. No wire nuts or pigtails for simple and neat wiring.
- Innovative installation Eliminates need for secondary alignment adjustments.
- Self aligning catch plate and adjustable magnet centerline.
- Extension Rods, Adjustable Extension Rods, Components and Installation Guides.

MH Series Electromagnetic Holder Order Guide

Series	Voltage	Mounting	Finish
MH	24/120 (2)	Flush (F)	Chrome (CP)
	12/24 (1)	Surface (S)	Brass (BR)
		Recessed (R)	Dark Bronze (DB)
		Ground (G1)	
		Ground (G2)	



MH 2 F CP (shown)

MH Series Magnetic Door Holders



Extension Rods

MH E .5 (finish)	1/2" extension
MH E 1 (finish)	1" extension
MH E 1.5 (finish)	1-1/2" extension
MH E 1.5A (finish)	1-1/2" adj. extension
MH E 2 (finish)	2" extension
MH E 2A (finish)	2" adj. extension
MH E 3 (finish)	3" extension
MH E 4 (CP Only)	4" extension
MH E 4A (finish)	4" adj. extension
MH E 5A (finish)	5" extension

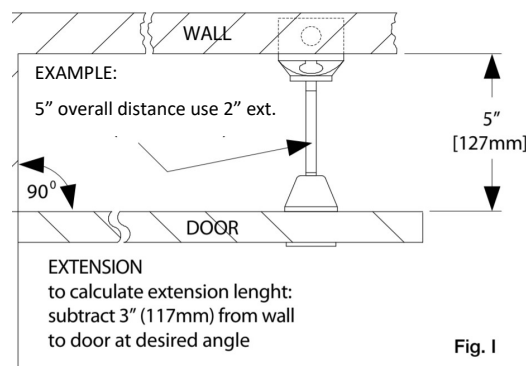


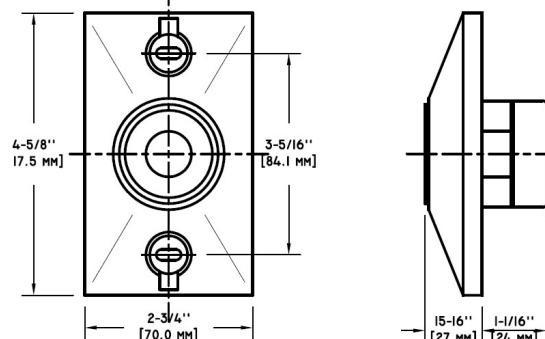
Fig. 1

Accessories

MH C (finish)	Catch Plate
MH SB (finish)	Swivel Base
MH BB (finish)	Surface Box
MH W	Extension Wrench
MH DF	Drill Fixture



DOOR MAGNET



PERFORMANCE DATA

Model	Voltage	DC/mA	AC/mA	Terminals	LB.	KG.
1224	12V	40	38	C&L	30	13.6
	24V	40	36	C&H	30	13.6
24120	24V	20	19	C&L	40	18.1
	120V	—	20	C&H	35	15.8
24220	24V	20	19	C&L	40	18.1
	220V	—	15	C&H	25	11.3

HIGH HOLDING FORCE / SPECIAL APPLICATIONS

Model	Voltage	DC/mA	AC/mA	Terminals	LB.	KG.
1224	24V	85	81	C&L	75	34.0
24120	120V	—	100	C&L	110	49.8

To obtain performance values in high holding force table above apply high listed voltage to low voltage terminals (C & L). NOTE: This configuration can only be applied to models 1224 & 24120.

This product meets UL, FM, CSFM, and BSA requirements. All products designed and manufactured in the USA.