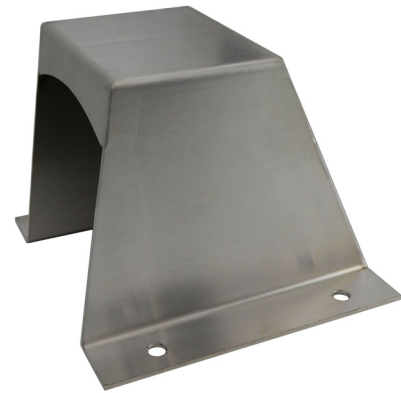


New Products from **DON-JO** MFG., INC.

July
2020



**Hands-Free
& Anti-Microbial**



Exit Device Protector



Hinge Side Wrap Around



**Schlage & Sargent Mortise
Lock Wrap Arounds**

July 2020

Hands Free Products

Foot Pulls



#46—Strongest and Most Durable Foot Pull Available. Completely Wraps the Door. Now with **"Soft-Touch"** Foot Guard.



#47—Ramped Design Eliminates "Stomping". Surface Applied. ThruBolted. Now with **"Soft-Touch"** Foot Guard.



#48—Double Thru-Bolted, Surface Applied. Dual Use (Top or Bottom Pull).

Arm Pulls



#42—Double Thru-Bolted, Surface Applied



#43—Surface Applied. ThruBolted, 4-1/8" Clearance. Now with **"Soft-Touch"** arm protector.



#44—Classic Hospital Pull

*All available in 630 (stainless), 622 (black), DU (dark bronze)
All products available with optional Anti-Microbial Coating on 630*

July 2020

Anti-Microbial Solutions

Three Options

Choose the Solution that's Right for You!

Don-Jo AM Coating

Don-Jo AM Coating can be applied to any product without change in appearance! It is an EPA registered durable, transparent coating. It kills bacteria, fungus, molds, and algae (Including MRSA, Strep, Staph & E-Coli).

It's molecularly bonded to the surface by a covalent bond, meaning it will not rub off. This durability means you don't have to worry about reapplying. It will be working for you and keeping you safe from microbes for years to come.

DJ-AM doesn't just kill the microbe like typical chemical cleaners, it mechanically destroys it. This mechanical disabling means that the risk of cross-contamination is decreased, as the microbe cannot be picked up and spread to other surfaces.



Don-Jo CopperCoat

Don-Jo CopperCoat antimicrobial solutions provide a one-time copper-based application on surfaces that works 24x7, never wears off, and kills 99.9% of bacteria* in 2 hours.

CopperCoat uses CuVerro® antimicrobial copper, the first class of solid-surface material registered to make public health claims with both the EPA in the United States and PMRA in Canada. It is a chemical free, solid metal alloy coating.

Available on 630 (Stainless Steel) and 628 (Aluminum) products. 630 is recommended for exterior applications. This application alters the finish to appear similar to pewter and indicate the anti-microbial property.



Copper Zone *Great Aftermarket Solution!*



Add EPA Registered Anti-Microbial Copper to any product! Can be field applied or factory applied to any Don-Jo product.

Available in several sizes for use with pushes, pulls, plates, grab bars, etc.

High quality, high endurance adhesive backed copper sheets are simple to apply!



*Contact factory for efficacy and regulatory information

July 2020

Hinge Side Door Wrap Around with Hinge Reinforcement Prep

An Industry First!

Repair Damaged or Destroyed Hinge Preps.

Wrap Around for the hinge side of the door – Wood or Metal!

Prepared and reinforced to accept 4-1/2" or 5" Standard Weight Hinge*. Ready out of the box, no additional prep required.

*hinge sold separately



45-FE

Model	S/630	10B/613
45 FE	\$58.00	\$68.00
50 FE	\$58.00	\$68.00
45 CW	\$67.00	\$77.00
50 CW	\$67.00	\$77.00

Schlage and Sargent Mortise Lock Wrap Around

Ease of Installation for Sectional Mortise Locks!

No more drilling holes in stainless steel for select Sargent and Schlage mortise locks.

- Use 9080 CW for Schlage Single Cylinder Functions
- Use 9050 CW for Schlage Single Cylinder with Thumb Turn
- Use 8255 CW for Sargent 8204, 8255, 8206 and other Single Cylinder Functions

*Please provide handing when ordering
Ex: 9050 S CW RHR



9050 S CW

8255 S CW

Model	S/630	PB/605	BZ/612	10B/613
9080 CW	\$42.90	\$50.89	\$125.85	\$53.10
9050 CW	\$42.90	\$50.89	\$125.85	\$53.10
8255 CW	\$42.90	\$50.89	\$125.85	\$53.10

July 2020

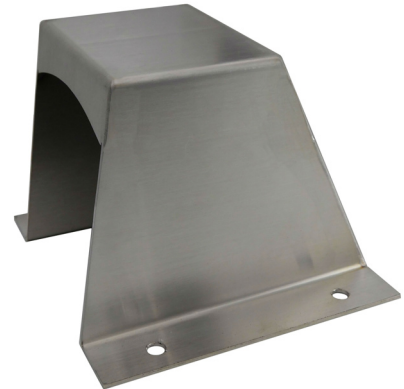
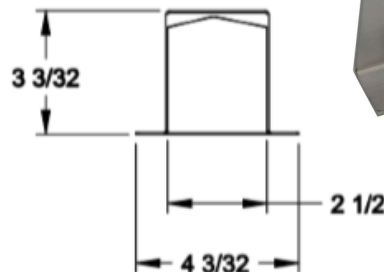
#84 Panic Device End Cap Protector

Designed and manufactured in America to protect panic device end caps from damage and destruction.

The unit fits over Corbin-Russwin, Sargent, Yale, Monarch, Von Duprin, and Adams-Rite units.

4" Overall Length.

For endurance and reliability, this unit is made of 18 gauge stainless steel with a 630 finish (32D).



Don-Jo #84 630
List \$163.00

#87 Door Protector

NEW!

Length: 8-3/4", Width: 2"
Projects 3-1/4"
7 Gauge Stainless Steel

Protect Locks and Exit Devices from Carts,
Gurneys and other Damage.



#87 630
List \$90.00

Did You Know?

Don-Jo Solves Problems



AR NDE 630
List \$75.00

Custom Spacer for
Schlage NDE Locks

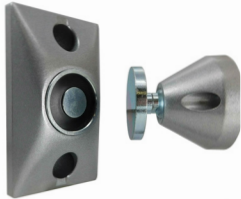
For installing NDE's on
1-3/8" doors

**Got a problem you
need solved?**

sales@don-jo.com

April 2020

Electromagnetic Door Holders



**Flush Mount –
Chrome**



**Surface Mount –
Bronze**



**Recess Mount –
Brass**



**Accessories &
Extensions**

- Dual Voltage (24/120 Volt AC or DC)
- Powder Coated Chrome, Brass, Bronze
- Flush Mount, Surface Mount, Recessed Mount, Ground Mount (single or double)
- Adhesive Mounting Template
- Extension Rods and Extension Angles
- Superior Holding Force
- Low Residual Magnetism
- Also Available with 12/24 - AC/DC Dual Voltage Coil
- Made in USA

See page 8 for pricing

Inactive Door Wrap Around with ASA Strike Prep

An Industry First!

Wrap Around for the inactive door. Prepared and reinforced to accept 4-7/8" ASA Strike*
Ready out of the box. No additional assembly required.



Model	Size	List
478 10B CW	5"x12"	\$77.00
478 S CW	5"x12"	\$67.00



Model	Size	List
478 10B FE	1"x12"	\$68.00
478 S FE	1"x12"	\$58.00

*strike sold separately

April 2020

Barn Door/Sliding Door Hardware Sets



BD1815
3/4" Round Pull



BD1837
1" Half Round Pull



BD1830
3/8" x 1-1/4" Flat Bar Pull



BD18
Flush Pull Only

Pair our ever-popular Architectural Flush Cup Pull with one of our Standard Pulls to create a competitively priced, architecturally appealing solution to Barn Doors/Sliding Doors.

- Stocked in 630, 613, and 622 Black

Custom Finishes Available

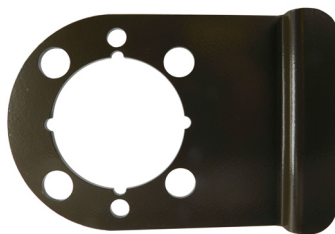
- Full Pull Dimension: 2-1/2" x 7"

- All Pulls 6" CTC

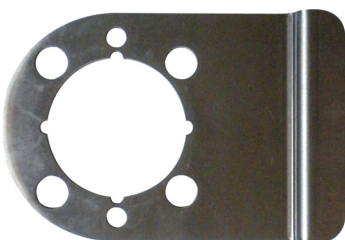
See page 8 for pricing

New WSLP "Slipper" Latch Guard

WSLP "slips" under the rose of cylindrical locks (2-3/4" BS)



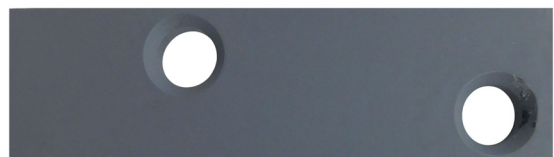
WSLP 204 (SL or DU)
\$50.55



WSLP 104 630
\$55.90

Frame Filler for GJ 100 Overhead Stop

OH 100 PC
List Price: \$16.95



List Prices

Based on 2019 Pricebooks

Barn/Sliding Door Sets

BD1815 – 3/4" Round Pull		List Price
630		\$69.75
613		\$89.50
622		\$94.50
BD1830 – 3/8" x 1-1/4" Flat Bar Pull		List Price
630		\$80.65
613		\$99.15
622		\$104.65
BD1837 – 1" Half Round Pull		List Price
630		\$85.70
613		\$104.25
622		\$109.15
BD18 – FLush Pull Only		List Price
	Single	BTB Pair
630	\$27.75	\$65.60
613	\$36.35	\$82.70
622	\$38.80	\$87.60

Did You Know?

**Don-Jo Stocks Hospital
Push/Pull Latches
for Immediate Delivery!**



Cylindrical Latch, 1/2" throw, passage function

- The 4500 Series is 2-3/4" backset
- The 4500 Series is 5" backset
- Equal and Comparative to GJ, Hager, Rockwood and Trimco
- UL Listed, Meets ADA
- For 1-3/4" Doors
- Field Reversible

Stainless Steel List \$262.30

Electromagnetic Door Holders

Model	Mount	Finish	List Price
MH 2 F CP	Flush	Chrome	\$165.00
MH 2 F BR	Flush	Brass	\$179.00
MH 2 F DB	Flush	Bronze	\$182.00
MH 2 S CP	Surface	Chrome	\$179.00
MH 2 S BR	Surface	Brass	\$195.00
MH 2 S DB	Surface	Bronze	\$204.00
MH 2 R CP	Recessed	Chrome	\$165.00
MH 2 R BR	Recessed	Brass	\$179.00
MH 2 R DB	Recessed	Bronze	\$182.00
MH 2 G1 CP	Ground Single	Chrome	\$224.00
MH 2 G1 BR	Ground Single	Brass	\$240.00
MH 2 G1 DB	Ground Single	Bronze	\$255.00
MH 2 G2 CP	Ground Double	Chrome	\$272.00
MH 2 G2 BR	Ground Double	Brass	\$293.00
MH 2 G2 DB	Ground Double	Bronze	\$310.00

Extension Rods

MH E .5 (finish)	1/2" extension	\$16.75
MH E 1 (finish)	1" extension	\$16.75
MH E 1.5 (finish)	1-1/2" extension	\$17.50
MH E 1.5A (finish)	1-1/2" adj. extension	\$18.75
MH E 2 (finish)	2" extension	\$19.95
MH E 2A (finish)	2" adj. extension	\$21.25
MH E 3 (finish)	3" extension	\$20.95
MH E 4 (CP Only)	4" extension	\$26.25
MH E 4A (finish)	4" adj. extension	\$26.75
MH E 5A (finish)	5" adj. extension	\$28.75

Accessories

MH C (finish)	Catch Plate	\$26.35
MH SB (finish)	Swivel Base	\$74.00
MH BB (finish)	Surface Box	\$43.50
MH W	Extension Wrench	\$2.05
MH DF	Drill Fixture	\$210.00

40 Years
of American Made Quality



January 2020

Extended Lip Dimple Strikes



"D" Shape Extended Lip Dimple Strike

2-1/4" tall

Available in lengths: 1-1/2", 1-3/4", 2", 2-1/2", 3", 4"

Custom lengths available

Finishes: 605, DU, 630, 622

"T" Shape Extended Lip Dimple Strike

2-3/4" tall

Available in lengths: 1-1/2", 1-3/4", 2", 2-1/2", 3", 4"

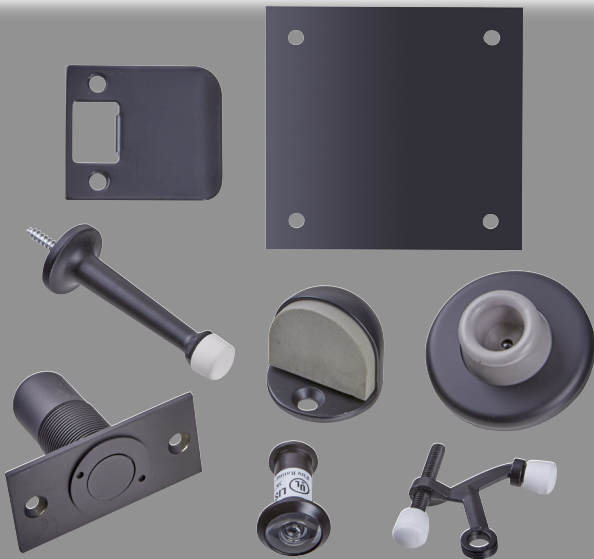
Custom lengths available

Finishes: 605, DU, 630, 622

See page 11 for pricing

Also available in ASA 4-7/8" versions

Black Finishes in Stock!



See page 11 for pricing

Non-Stock Items Also Available in Black

Ladder Pulls • Wrap Arounds • Latch Protectors
Filler Plates • Hinges

Part #	Part #
90 BK Kick Plates	7119 315 Pull Plate
70 BK All Size Push Plates	1700 622 Roller Latch
19 315 Door Pull	1702 622 Roller Latch
20 315 Door Pull	1704 622 Roller Latch
ADA Signs	2021 622 Coordinator
1406 622 Convex Wall Bumper	2040 622 Coordinator
1407 622 Concave Wall Bumper	9234 622 T Strike
1440 622 Low Dome Stop	ST 214 622 Replacement Strike
1442 622 High Dome Stop	ST 214 RC Replacement Strike
1450 622 Low Goose Stop	EL 100's Ext. Lip Strikes
1452 622 High Goose Stop	ETS 100's Ext. T Strikes
1504 622 Base Stop	PDL 100 Pocket Lock
1506 622 Base Stop	PDL 101 Pocket Lock
1606 622 Flip Lock	104 622 Edge Pull
125 622 Finger pull	106 622 Edge Pull

1156,1157,1158,1158,1160-3151" Diameter offset door pulls

January 2020

All Gender and Title 24 Signs



CHS 9 – Title 24, All Gender

List \$16.70*

CHS 9 should be mounted on the door.
Does not have braille



HS 9070 33 – All Gender

List \$15.80*

6" x 9"

HS 9070 33 should be mounted on the wall next to the door.
Includes braille

Other Title 24 Signs



CHS 1
CHS 6



CHS-2
CHS-7



CHS-3
CHS-8



CHS-4



CHS-5



HS-9050-01
HS-9060-01
HS-9070-01
HS-9090-01



HS-9060-02
HS-9070-02



HS-9060-03
HS-9070-03



HS-9070-07



HS-9060-04
HS-9070-04



HS-9050-05
HS-9060-05
HS-9070-05
HS-9090-05



HS-9060-22
HS-9070-22



HS-9070-08

Heavy Duty Crash Chain in Dark Bronze



Part #	Size	List Price
HDCC 2012 DU	20.5"	\$33.60*
HDCC 2512 DU	25.5"	\$34.40*
HDCC 3012 DU	30.5"	\$35.20*

Extended Lip Strikes in Polished Stainless



Part #	Price	Part #	Price
EL 115 629	\$9.50	9115 629	\$6.50
EL 175 629	\$9.50	9175 629	\$6.50
EL 102 629	\$9.50	9102 629	\$6.50
EL 125 629	\$9.50	9125 629	\$6.50
EL 103 629	\$9.50	9103 629	\$6.50
EL 104 629	\$13.40	9115 629 RC	\$6.50
EL 115 629 RC	\$9.50	9175 629 RC	\$6.50
EL 175 629 RC	\$9.50	9102 629 RC	\$6.50
EL 102 629 RC	\$9.50	9125 629 RC	\$6.50
EL 125 629 RC	\$9.50	9103 629 RC	\$6.50
EL 103 629 RC	\$9.50	*2020 List Prices	
EL 104 629 RC	\$13.40		

List Prices

Based on 2020 Pricebooks

Extended Lip Dimple Strikes

2-1/4" 'D'		DT9103 DU	\$10.90
D9115 605	\$6.20	DT9104 605	\$14.20
D9115 622	\$11.60	DT9104 622	\$21.20
D9115 630	\$5.80	DT9104 630	\$13.60
D9115 DU	\$10.30	DT9104 DU	\$19.90
D9175 605	\$6.20	4-7/8" ASA	
D9175 622	\$11.60	DEST 115 622	\$30.05
D9175 630	\$5.80	DEST 115 630	\$23.75
D9175 DU	\$10.30	DEST 115 DU	\$29.30
D9102 605	\$6.20	DEST 158 622	\$30.05
D9102 622	\$11.60	DEST 158 630	\$23.75
D9102 630	\$5.80	DEST 158 DU	\$29.30
D9102 DU	\$10.30	DEST 175 622	\$30.05
D9125 605	\$6.20	DEST 175 630	\$23.75
D9125 622	\$11.60	DEST 175 DU	\$29.30
D9125 630	\$5.80	DEST 102 622	\$30.05
D9125 DU	\$10.30	DEST 102 630	\$23.75
D9103 605	\$6.20	DEST 102 DU	\$29.30
D9103 622	\$11.60	DEST 125 622	\$30.05
D9103 630	\$5.80	DEST 125 630	\$23.75
D9103 DU	\$10.30	DEST 125 DU	\$29.30
D9104 605	\$13.30	DEST 103 622	\$30.05
D9104 622	\$19.30	DEST 103 630	\$23.75
D9104 630	\$12.40	DEST 103 DU	\$29.30
D9104 DU	\$18.10	DEST 104 622	\$34.95
2-3/4" 'T'		DEST 104 630	\$29.80
DT9115 605	\$6.60	DEST 104 DU	\$34.25
DT9115 622	\$12.20	1406 622	\$6.85
DT9115 630	\$6.00	1407 622	\$6.85
DT9115 DU	\$10.90	1440 622	\$8.30
DT9175 605	\$6.60	1442 622	\$8.70
DT9175 622	\$12.20	1450 622	\$25.50
DT9175 630	\$6.00	1452 622	\$29.05
DT9175 DU	\$10.90	1504 622	\$7.75
DT9102 605	\$6.60	1506 622	\$18.50
DT9102 622	\$12.20	1606 622	\$34.00
DT9102 630	\$6.00	125 622	\$3.20
DT9102 DU	\$10.90	1700 622	\$35.80
DT9125 605	\$6.60	1702 622	\$35.80
DT9125 622	\$12.20	1704 622	\$35.80
DT9125 630	\$6.00	2021-622	\$129.90
DT9125 DU	\$10.90	2040	\$128.70
DT9103 605	\$6.60	9234 622	\$5.00
DT9103 622	\$12.20	ST 214 622	\$4.80
DT9103 630	\$6.00	ST 214 622 RC	\$4.80

Black Finishes

PDL 100 622	\$18.70	ETS 175 622	\$15.95
PDL 101 622	\$22.20	ETS 102 622	\$15.95
104 622	\$15.90	ETS 125 622	\$15.95
106 622	\$37.70	ETS 103 622	\$15.95
EL 115 622	\$13.50	ETS 104 622	\$20.75
EL 175 622	\$13.50	T9115 622	\$10.95
EL 102 622	\$13.50	T9175 622	\$10.95
EL 125 622	\$13.50	T9102 622	\$10.95
EL 103 622	\$13.50	T9125 622	\$10.95
EL 104 622	\$19.30	T9103 622	\$10.95
EL 115 622 RC	\$13.50	90 BK Under 8"	\$12.60
EL 175 622 RC	\$13.50	90 BK 8"-16"	\$11.90
EL 102 622 RC	\$13.50	90 BK Over 16"	\$12.70
EL 125 622 RC	\$13.50	70 BK	\$11.35
EL 103 622 RC	\$13.50	71 BK	\$11.75
EL 104 622 RC	\$19.30	72 BK	\$15.95
9115 622	\$10.35	73 BK	\$18.70
9175 622	\$10.35	19 315	\$29.45
9102 622	\$10.35	20 315	\$31.95
9125 622	\$10.35	7119 BK	\$44.95
9103 622	\$10.35	7120 BK	\$47.15
9115 622 RC	\$10.35	1156 315	\$65.10
9175 622 RC	\$10.35	1157 315	\$65.40
9102 622 RC	\$10.35	1158 315	\$70.40
9125 622 RC	\$10.35	1159 315	\$109.20
9103 622 RC	\$10.35	1160 315	\$69.40
ETS 115 622	\$15.95		



ARCHITECTURAL HARDWARE & ACCESSORIES

Stock and Custom Wrap Around Plates for retrofitting or replacing Stand Alone Access Control Products

Contact us at 800-628-8389 or visit www.don-jo.com for more information



Visit www.don-jo.com to explore our entire offering of Architectural Hardware & Door Safety and Security Products



PHONE: 978.422.3377
FAX: 978.422.3467
Toll Free: 800.628.8389
Toll Free Fax: 800.278.8202

www.don-jo.com
info@don-jo.com

