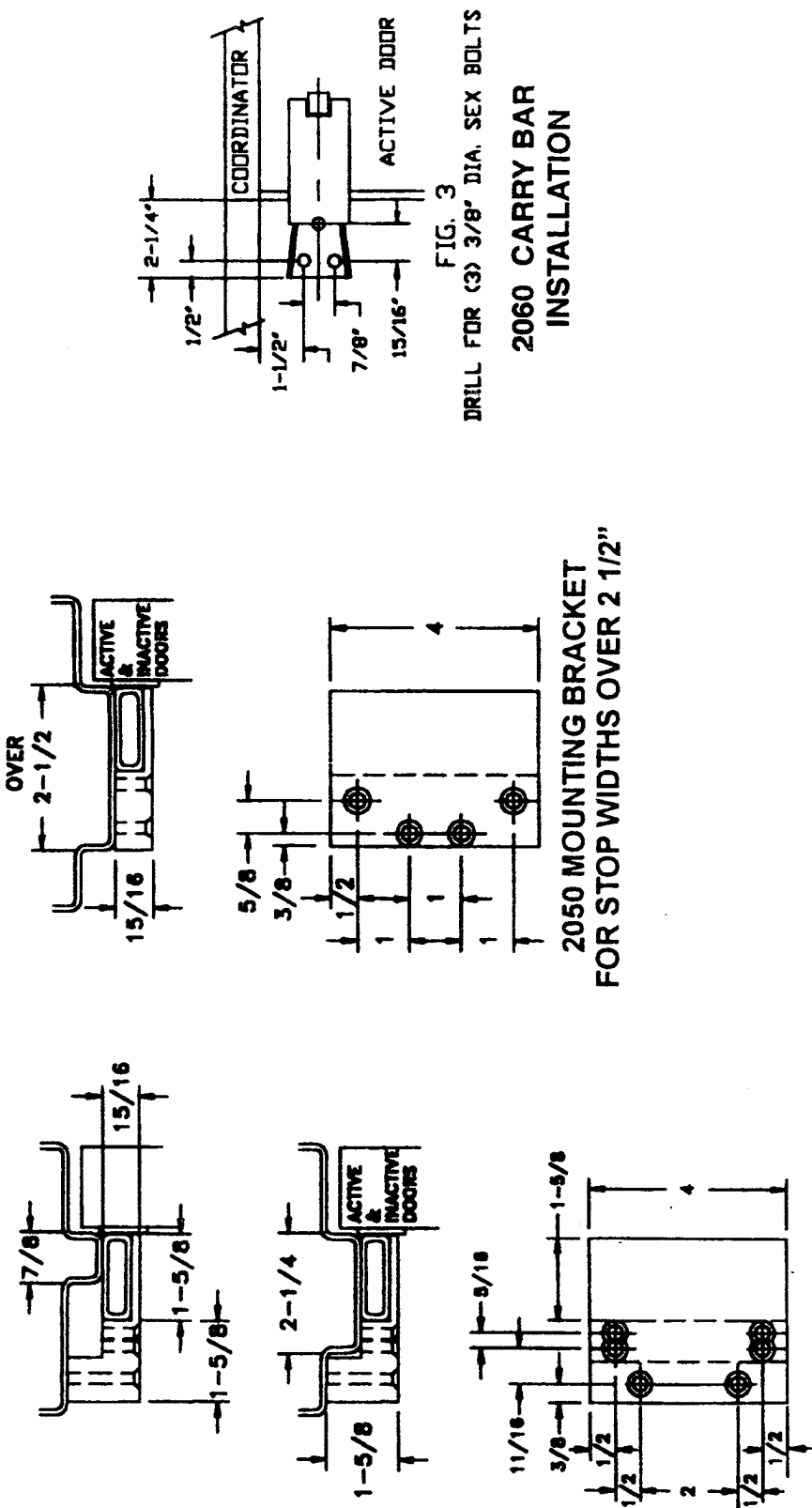


2000 SERIES COORDINATORS

MOUNTING BRACKETS FOR STOP APPLIED HARDWARE
 BRACKETS MUST BE FIELD DRILLED AND TAPPED FOR STOP MOUNTED HARDWARE
 INSTALL DOOR APPLIED HARDWARE 15/16" LOWER TO CLEAR COORDINATOR AND BRACKET.



2050 MOUNTING BRACKET
 FOR STOP WIDTHS OVER 2 1/2"

2051 MOUNTING BRACKET
 FOR STOP WIDTHS OVER 2 1/2"

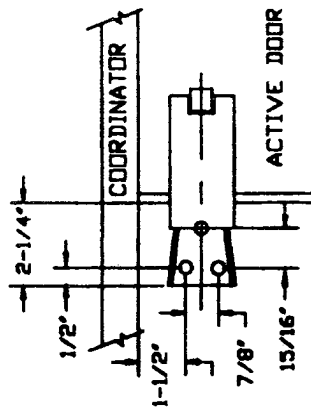


FIG. 3
 DRILL FOR (3) 3/8" DIA. SEX BOLTS
 2060 CARRY BAR
 INSTALLATION