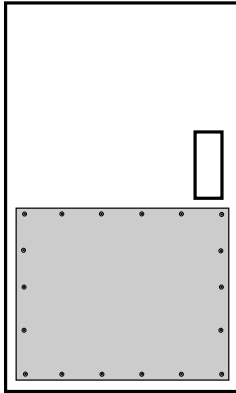




COMMERCIAL KICK PLATES

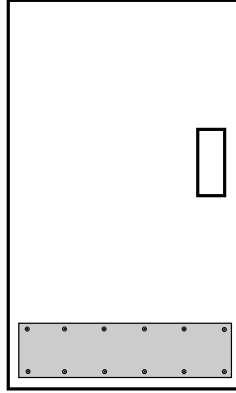
ARMOR PLATE



Used on doors subject to marring or damage from carts, trucks, etc.

ANSI:
J101 Metal J105 Plastic

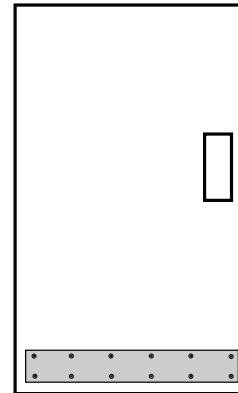
KICK PLATE



Used on doors subject to marring or damage from foot traffic.

ANSI:
J102 Metal J106 Plastic

MOP PLATE



Used on doors subject to marring or damage during cleaning operations.

ANSI:
J103 Metal J107 Plastic

- Individually packaged with screws
- Full threaded to the head stainless steel sheet metal screws with plated finish
- Beveled 3 or 4 sides optional
- Commercial grade thickness
- Other thicknesses available on special order
- Furnished with grain or satin finish running horizontally to door
- Finishes: 605, 606, 609, 612, 613, 619, 620, 626, 628, 629, 630, Brass Tone (BT), Dark Anodized Aluminum (DB), Kydex, and **Endurance**.™
- Plastic colors include: Black, Brown, Gray, Beige, White, Clear

NUMBER	MATERIAL
90	.050 Metal
91	.038 Metal
92	.125 Plastic
93	.125 Clear Plastic

How to Order: Height x Length x Finish
e.g.: 8" X 34" - 630

Warnock Hersey



New WARNOCK HERSEY LISTED ARMOR PLATES

We now offer Armor Plates for fire rated 3 hour metal doors. Please specify prefix "WH" when ordering (i.e. WH-48" x 48"-630). Screw mount only. There is a \$5.00 per plate additional charge.

RANGE SHIELDS

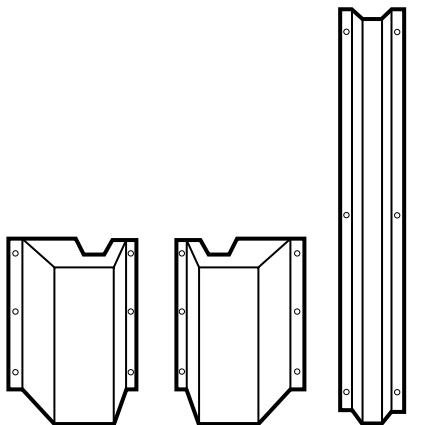


RS2430

NUMBER	DIMENSIONS
RS2430	24" x 30"

SHELF PACK: 4
FINISHES: White, Almond
 22 (.032) Gauge

VERTICAL ROD PROTECTOR



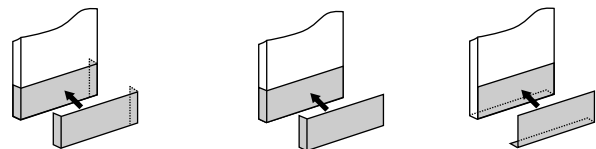
#81 For use on right hand reverse doors
#83 For use on left hand reverse doors
#85 Rod Cover

NUMBER	DESCRIPTION	DIMENSIONS
81	Latch bolt cover	2 1/8" projection
83	Latch bolt cover	2 1/8" projection
85	Rod cover	24" x 1 1/16"

SHELF PACK: 1
FINISHES: 630
 18 (.050) Gauge

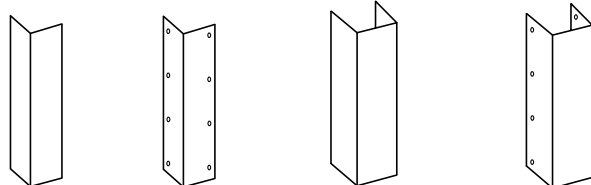
- Assist in handicap conformance
- Use in hospitals, schools, etc.
- Installs with #6 x 3/4" screws directly into the door.
- Installs on any type of wood, metal or plastic door, any thickness. Covers the latching bolt and lower portion of the vertical rod assembly.
- Fire rated
- Stainless Steel, Satin Finish

CORNER GUARDS / U-CHANNELS / ANGLE PLATES



Two sided angle plate One sided angle plate Bottom angle plate

I288/I289



I290 **I295** **I298** **I299**

NUMBER	MOUNTING
I288	Scotch Mount
I289	Sheet Metal Screw
I290	Scotch Mount
I295	Sheet Metal Screw
I298	Scotch Mount
I299	Sheet Metal Screw

How to Order: Leg x Door Width x Leg x Height

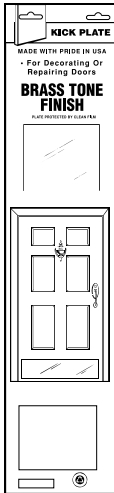
SHELF PACK: 1
FINISHES: 605, 606, 609, 612, 613, 628, 629, 630

- Specify size (standard size 3" x 3" x 40")



DISPLAY PACKAGED KICK PLATES for decorating or repairing doors

Innovative packaging includes an outer corrugation that insures the inner package will remain fresh for display. Package allows for hanging or stacking.



NUMBER	DIMENSIONS
KP-628	6" x 28"
KP-630	6" x 30"
KP-632	6" x 32"
KP-634	6" x 34"
KP-828	8" x 28"
KP-830	8" x 30"
KP-832	8" x 32"
KP-834	8" x 34"

SHELF PACK: 1 Display Packaged Size - 8 1/4" x 38 1/2"
FINISHES: (KP-628, KP-630, KP-632, KP-634) **605, 630**
 (KP-828, KP-830, KP-832, KP-834) **605, 628, 630, Brass Tone (BT)**



ENDURANCE™

Finish by Don-Jo® BRASS FINISH...lasts forever.

Don-Jo Mfg. Inc. is pleased to announce that we now have kick plates available with the **ENDURANCE™ FINISH**.

Featuring the PVD finish process, these plates are guaranteed, in writing, against

- TARNISHING • FLAKING • PITTING • DISCOLORATION

They are packaged in our traditional brown kraft paper and are available in any size up to 48" x 48".